

MONTHLY MEMBERSHIP PROGRESS REPORT

District A 15

Results as of: 5/31/2026

GMT:

LOCATION ONTARIO

GMT CA

Clubs			
RESULTS FOR 2025-2026			
QUARTER	NEW CLUB GOAL	NEW CLUBS	DROPPED CLUBS
JULY/AUG/SEPT	0	0	0
OCT/NOV/DEC	1	0	0
JAN/FEB/MAR	0	0	0
APR/MAY/JUNE	0	0	0

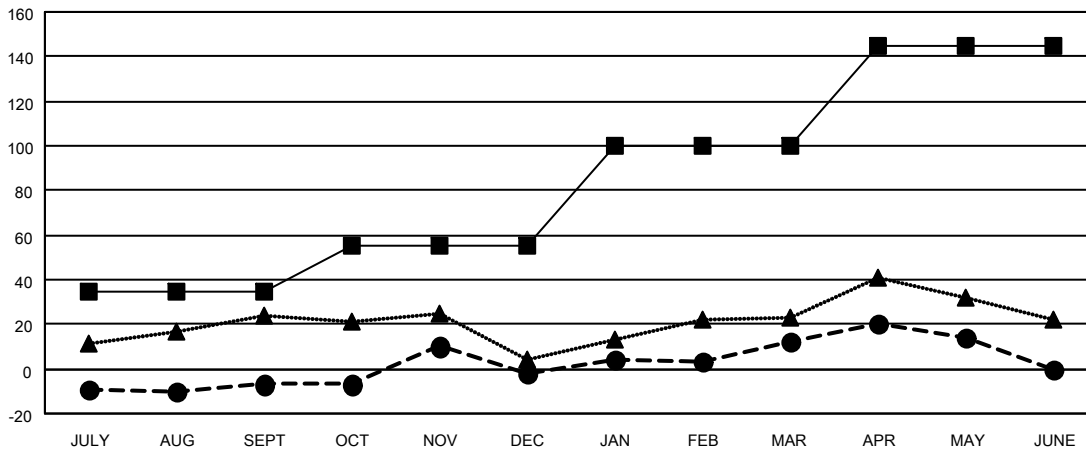
Members			
RESULTS FOR 2025-2026			
QUARTER	MEMBER GROWTH NET GOAL	MEMBER GROWTH ACTUAL	DROPPED MEMBERS ACTUAL (including transfers)
JULY/AUG/SEPT	35	16	23
OCT/NOV/DEC	20	43	32
JAN/FEB/MAR	45	29	15
APR/MAY/JUNE	45	20	18

GOALS AND ACTUAL NEW CLUBS CUMULATIVE



- - CURRENT YEAR GOALS FOR NEW CLUBS
- - CURRENT YEAR ACTUAL NEW CLUBS
- ▲ - LAST YEAR ACTUAL NEW CLUBS

GOALS AND ACTUAL MEMBERS CUMULATIVE



- - MEMBER GROWTH NET GOAL
- - MEMBER GROWTH ACTUAL
- ▲ - LAST YEAR MEMBERSHIP ACTUAL

DROPPED CLUBS: 0	28 CLUBS OF 56 ADDED 1 OR MORE NEW MEMBERS	GENDER DISTRIBUTION MALE 906 (68.43%) FEMALE 418 (31.57%)
DROPPED MEMBERS DECEASED 14 CLUB CANCELLED 0 OTHER 74 TOTAL 88	CLICK HERE FOR CUMULATIVE MEMBERSHIP DATA	TOTAL FAMILY UNIT MEMBERS 183 FAMILY MEMBERS PAYING HALF DUES 93